

Optimizing Cyclone Intensity Prediction Through GA Enhanced Fruit Fly Optimized Hybrid CNN-Bi-LSTM Model for Accurate Forecasting

by Antonius Alijoyo

Submission date: 15-Nov-2025 01:31PM (UTC+0700)

Submission ID: 2801107522

File name: ediction_through_GA_enhanced_Fruit_fly_Optimized_Hybrid_CNN.docx (997.75K)

Word count: 8795

Character count: 52553

Optimizing Cyclone Intensity Prediction Through GA Enhanced Fruit Fly Optimized Hybrid CNN-Bi-LSTM Model for Accurate Forecasting

Dr. Franciskus Antonius Alijoyo^{1*}, Dr. Taviti Naidu Gongada², Dr. Chamandeep Kaur³, Dr.N. Mageswari⁴, Dr.J.C. Sekhar⁵, Janjhyam Venkata Naga Ramesh⁶, Prof. Ts. Dr. Yousef A.Baker El-Ebiary⁷, Zoirov Ulmas⁸

¹Principal, Center for Risk Management and Sustainability Indonesia,

²Lecturer, School of Business and Information Technology STMIK LIKMI Bandung, Indonesia.

³E-Mail: franciskus.antonius.alijoyo63@gmail.com^{1*}

⁴Assistant Professor, Dept of operations, GITAM school of Business, GITAM (Deemed to be) UNIVERSITY, Visakhapatnam. E-Mail: tgongada2@gitam.edu²

⁵Lecturer, Computer Science & Information Technology Department, Jazan University, Jizan, Kingdom of Saudi Arabia.E-Mail: kaur.chaman83@gmail.com³

⁶Associate Professor, Department of ECE, Ashoka Women's Engineering College, Andhra Pradesh, Kurnool. E-Mail: magesmaniengg@gmail.com⁴

⁷Professor in CSE, NRI INSTITUTE OF TECHNOLOGY, Guntur, Andhra Pradesh.

⁸E-Mail: jcsekar9@gmail.com⁵

¹²Assistant Professor, Department of Computer Science and Engineering, Koneru Lakshmaiah Education

²⁰Foundation, Vaddeswaram, Guntur Dist., Andhra Pradesh, India. E-Mail: jvnramesh@gmail.com⁶
Faculty of Informatics and Computing, UniSZA University, Malaysia. E-Mail: yousefelebiary@unisza.edu.my⁷

³⁰Assistant Teacher, Artificial Intelligence Department, Tashkent State University of Economics, Tashkent, Uzbekistan. E-Mail: u.zoirov@tsue.uz⁸

Abstract

Predicting cyclone intensity is a crucial part of weather forecasting, as it affects preparations for and responses to disasters. This framework tackles the urgent need for precise cyclone intensity prediction and offers a novel predictive model, utilising a hybrid CNN and Bi-LSTM architecture optimized through a Genetic Algorithm (GA) enhanced Fruit Fly Optimizer (FFO). Due to the direct influence that cyclone strength has on coastal areas and inhabitants, it is imperative to predict cyclone intensity, which has led to the development of sophisticated forecasting methods. Existing methods have mostly relied on conventional machine learning models and meteorological data, showing difficulties in capturing complex spatial-temporal patterns inherent in cyclone evolution. These shortcomings include inadequate feature extraction skills, underutilization of convolutional neural networks (CNN), and inadequate model tuning. This suggested model starts with preprocessing, including data reduction in size and normalisation to guarantee consistency and stability across datasets, is the first step. In feature extraction phase, where a hybrid CNN and Bi-LSTM architecture successfully captures complex spatiotemporal correlations in cyclone data, enabling the model to learn and adapt to changing cyclone patterns. Genetic Algorithm along with the Fruit Fly Optimizer to optimise model parameters is used for improving the model's generalizability and predictive power. Experimental results are implemented in Python software and it shows that this method outperforms current models by an average of about 21% when compared to existing methods like VGG-16 (78%) and Ty 5-CNN (95.23%). The CNN-Bi-LSTM model that is being proposed has an outstanding accuracy of 99.4% when it comes to cyclone intensity prediction. This novel model provides a promising path for improving cyclone intensity prediction, ultimately enhancing disaster preparedness and risk mitigation efforts in vulnerable areas.

Keywords: Cyclone Intensity; Genetic Algorithm; Fruit Fly Optimizer; Bidirectional LSTM; Disaster Preparedness.

1. Introduction

Cyclone strength, a crucial aspect of tropical cyclone forecasting, describes the extent of a cyclone's capacity for destruction, taking into account elements including wind speed, air pressure, and storm surge [1]. The ability of institutions and communities to make educated decisions to lessen the destructive effects of these natural disasters depends on precise cyclone strength forecast, which is of utmost importance for preparedness for catastrophes, risk evaluation, and quick evacuation operations [2]. For weather forecasters and academics,

cyclones present a daunting challenge since their intensity is constantly shifting and vulnerable to fast change as it interacts with many environmental conditions [3]. A complex strategy involving advanced technologies like satellite data, computer modelling, and machine learning algorithms is needed to tackle this problem. Since small improvements in accuracy of forecasting can result in considerable reductions in the amount of physical damage, human casualties, and financial expenses connected with cyclone incidents, scientists in the area are always working to improve the reliability of cyclone intensity predictions. In order to improve resilience and disaster response capabilities in cyclone-prone regions around the world, constant attempts are being made to improve models for forecasting, utilise the potential of artificial intelligence, and utilise optimisation methods [4].

The increasing frequency and intensity of cyclonic activities around the world have made it important to improve cyclone intensity forecast. This is because it is crucial for disaster management, safety for people, and climate research [5]. This climatic phenomenon highlights the critical need of precise forecasting by posing a serious risk to coastal individuals, economies, and ecosystems. The amount of damage and misery that a cyclone may cause are largely determined by the strength of the storm, which is generally defined by wind speed and accompanying risks like hurricane surges and heavy rainfall [6]. The ability to evacuate on time, allocate resources, prepare for a disaster, and minimise casualties and destruction of property all depend on accurate and timely forecasts [7]. The intricacy of cyclone factors, which is impacted by a wide range of meteorological factors and oceanic circumstances, is an important obstacle to weather forecasters and climate researchers. The creation of more complex, methods based on data was required since conventional forecasting algorithms frequently fail to capture these nuanced relationships. cyclones are becoming more erratic and could potentially prove more devastating due to the compounding consequences of changes in the climate, such as increasing sea levels and elevated sea surface temperatures [8].

There are serious ramifications when cyclone intensity predictions are inaccurate, affecting everything from infrastructure and individuals to industries and the natural world [9]. Cyclones, one of nature's most destructive calamities, have the potential to cause unimaginable destruction if they are overestimated or wrongly predicted. Reliable severity projections can prevent needless casualties and displacement of people by causing insufficient planning, delayed evacuations, and inefficient resource allocation. Affected populations are made even more vulnerable by the associated strong winds, storm surges, and torrential rains, which can seriously harm vital infrastructure like houses, utilities, transit systems, and institutions [10]. The effects on the ecosystem are similarly severe because cyclones can cause pollution of water, destruction of forests, and coastline erosion, upsetting fragile ecosystems and maintaining balance of the environment [11]. The impact on the economy is significant, resulting in damages to agriculture, billions of dollars in property damage, and interruptions to sectors of the economy that depend on reliable supply lines. The seriousness of the issue is exacerbated by the rising frequency and intensity of cyclonic occurrences, which are partly attributable to climate change, making precise forecasting a pressing global necessity [12]. It is impossible to exaggerate the importance of accurate cyclone intensity forecasting in a world where the human population continues to concentrate in coastal areas, urbanisation is on the rise, and interconnection increases the reach of catastrophic effects. It acts as the initial layer of defence against an increasingly dangerous and unreliable natural phenomenon, having a direct impact on disaster response plans, resource allocation, and community resilience. It also plays a crucial role in ensuring the safety of individuals, assets, and the long-term sustainability of areas at risk around the globe.

In order to improve forecast precision as well as dependability during times of such powerful natural disasters, a variety of meteorological methodologies, computational models, and data-driven strategies are now being used. In order to create forecasts using their knowledge of cyclone dynamics, traditional meteorological approaches rely on the skills of meteorologists who analyse historical data, satellite imagery, and atmospheric conditions [13]. Another key component is the use of Numerical Weather Prediction (NWP) models, which simulate processes in the atmosphere and provide predictions using intricate mathematical calculations [14]. Also, to take into account uncertainties, Ensemble Prediction Systems (EPS) execute a number of simulations with modest modifications in the initial conditions [15]. These techniques have significantly increased our capacity to forecast cyclone tracks, but there are still difficulties in accurately predicting intensity changes, which can occur suddenly and without warning. A new era of machine learning and artificial intelligence applications has been introduced in by recent developments in technology, where computers are taught on enormous datasets to identify patterns and connections in cyclone behaviour. These data-driven models, including Deep Learning Neural Networks and Random Forests, try to accurately represent the complicated relationships underlying cyclone development. current information is essential for tracking cyclone formation has been made available by the combination of Doppler radar detection and satellite remote sensing technology [16]. To improve cyclone intensity

prediction and reduce the disastrous effects that these natural occurrences have on coastal populations, a variety of methodologies have been combined. To improve cyclone intensity prediction, these numerous methodologies have been used in an effort to lessen the disastrous effects that these natural occurrences have on coastlines, economic growth, and environments around the world.

The current approaches have some important shortcomings and limits, although being helpful in furthering our understanding of these powerful meteorological occurrences. Traditional meteorological methodologies, based on expert evaluation and past information, frequently find it difficult to accurately represent the quick and unpredictable variations in cyclone intensity, producing less accurate forecasts that might threaten efforts to prepare and public safety. Although advanced, parameterization and resolution issues confront Numerical Weather Prediction (NWP) models, which may limit their capacity to replicate the complex dynamics underlying cyclone development. Even while Ensemble Prediction Systems (EPS) provide probabilistic insights, they can be computationally expensive and might not fully account for all causes of uncertainty [17]. The integration of new scientific ideas into predicting practises can be hampered by some conventional approaches' reliance on empirical relations and heuristic criteria. Promising data-driven approaches have emerged in recent years from the emerging fields of machine learning and artificial intelligence, but they also struggle with problems including data scarcity, model interpretability, and overfitting. Furthermore, while satellite remote sensing and Doppler radar technologies give priceless real-time data, they may not completely cover cyclone zones and are subject to observational mistakes [18]. Therefore, an extensive awareness of the flaws in current prediction techniques is crucial because it emphasises the critical need to get past these obstacles and the significance of ongoing research and innovation in the search for more accurate cyclone intensity forecasts, which are essential for saving lives and reducing the catastrophic impact of these natural disasters on vulnerable coastal regions.

In order to improve the architecture of a hybrid convolutional neural network (CNN) and bidirectional long short-term memory (Bi-LSTM) model, the proposed research introduces a novel method that integrates genetic algorithms (GA) and fruit fly optimisation (FO). The CNN-Bi-LSTM model, an advanced hybrid model, aims to improve the precision of cyclone intensity forecasting. This study aims to enhance the system's effectiveness in gathering the intricate patterns and dynamics associated with cyclone development by utilising the optimisation abilities of GA and FO. This will lead to more accurate and accurate forecasts of cyclone intensity, that are essential for disaster readiness and prevention attempts. This study's key contributions are given below:

- To improve the accuracy and consistency of the input data, the study uses strong pre-processing techniques such data shrinking and normalization. This first stage makes sure that the modelling procedures that follow work with standardized and suitably scaled features.
- The research employs a complex feature extraction mechanism by combining a Convolutional Neural Network (CNN) with Bidirectional Long Short-Term Memory (Bi-LSTM). By utilizing a hybrid model, the system may better reflect the input features overall by capturing complex patterns and interactions over time in cyclone intensity data.
- By combining Fruit Fly Optimizer and Genetic Algorithm (GA), the study presents a novel method for optimizing the prediction of cyclone strength. The goal of this novel optimization technique is to improve the hybrid CNN-Bi-LSTM model's predictive accuracy and robustness by optimizing its parameters. A special and useful optimization framework for cyclone intensity predictions is provided by combining the use of GA and Fruit Fly Optimizer.

A structured format is used to organize the paper. The section 2 examines pertinent literature and looks at studies that are comparable to the one under examination. Outlining the particular difficulties that the research attempts to solve, Section 3 defines the problem statement. Section 4 goes into detail about the different parts and techniques that make up the methodology of the suggested model. A thorough discussion is started and the results are briefly summarized in Section 5. Section 6 concludes with an overview of the major findings and some thoughts on the implications for the future.

2. Related Works

Using infrared geostationary satellite images from the northwest Pacific Ocean basin through a cascading deep Convolutional Neural Network (CNN) framework, the suggested Tropical Cyclone Intensity Identification and Evaluation Model (TCICE Net) is a novel method for estimating tropical cyclone intensity was proposed by C.-J. Zhang et al. [19]. The TC Intensity Classification (TCIC) component, one of TCICE Net's two main modules, divides tropical cyclone intensities into three unique groups using infrared satellite images. It then introduces three

TC Intensity Estimation (TCIE) models built on CNN regression networks, each of which uses a different set of infrared imagery and TC best track data to produce intensity classifications for a given intensity. These TCIE models are painstakingly designed to take categorization mistakes included in the TCIC module into account, improving the general accuracy of intensities assessment. TCICE Net contributes to more accurate and trustworthy forecasts for tracking and minimising the effect of such possibly catastrophic weather events in the northwest Pacific Ocean basin by streamlining the categorization of tropical cyclone levels and improving the method of estimation by incorporating data from infrared satellite observations and historical track data. This model's ability to generalise and be resilient is constrained by its reliance on a dataset that is only from the northwest Pacific Ocean basin and uses best track data as reference strengths.

Tropical cyclones have sparked continuous efforts to improve their intensity forecast because of their propensity to cause significant human losses and economic destruction. Due to the spatial and temporal complexity of typhoon dynamics, recent research has focused on machine learning techniques. The Typhoon Intensity Spatio-Temporal Prediction Network (TITP-Net), an innovative deep learning model created to improve typhoon intensity forecasting, is introduced in this article by Jiang, Fan, and Wang [20]. Key physical components and multiple external factors influencing typhoon behaviour are carefully included in TITP-Net. Using a geographic attention module that uses two- and multidimensional convolutional procedures to identify spatio-temporal dependence, it maximises data utilisation. Extensive trials carried out within a thorough framework highlight TITP-Net's potential to advance typhoon intensity forecasting. TITP-Net is a promising method for improving our comprehension and predicting skills of such damaging weather-related events, with consequences for reducing their effects on society and the economy. It does this by seamlessly combining ecological and actual data and utilising spatio-temporal interactions. It is still difficult to estimate the short-term events with the model. Putting in place more complex networks can tax computing power and lengthen processing instances, which might restrict real-time application. Thus, to ensure practical utility in operational typhoon forecasting structures, a balance between complexity of models and computing capability must be found.

Ruttgers et al. discussed the crucial need for precise and timely typhoon forecasts, particularly for short lead times, also known as nowcasting, to save lives and reduce damage caused by these deadly storms [21]. They suggest a unique method that predicts the route and severity of typhoons in fractions of a second using a generative adversarial network (GAN) that runs effectively on a single graphics processing unit (GPU). The authors carried out parameter research with an emphasis on 6-hour track forecasts to better understand how meteorological variables affect typhoon predictions. According to their research, satellite photos combined with characteristics like learning velocity, temperature, pressure, and humidity have a good impact on forecast accuracy. In this framework, satellite images are replaced with reanalysis data on total cloud cover and vorticity fields to circumvent access issues and enable forecasts at 12-hour intervals. Track forecasts for both 6-hour and 12-hour intervals were produced using the study's ideal combination of factors, with corresponding averaged absolute errors of 44.5 and 68.7 kilometres, respectively. This study marks a significant development in typhoon forecasting, providing a potential approach for earlier and more precise forecasts, which are essential for emergency preparedness in typhoon-prone locations. More specifically, during the crucial period prior to a cyclone making landfall within the latitude range of 25 to 35 degrees North, the algorithm struggles to predict high wind speeds surpassing 60 knots with any degree of accuracy.

Wenwei et al. developed a deep learning-based multilayer perceptron (MLP) model that was created in an attempt to deal with the long-standing problem of improving tropical cyclone (TC) intensity predictions [22]. This model predicted changes in TC maximum wind speed within the Atlantic basin using the Statistical Hurricane Intensity Prediction Scheme (SHIPS) global predictors. The research involved two major experiments. In the first experiment, concentrating on a 24-hour forecast period, a leave-one-year-out (LOYO) testing strategy was used to reduce sampling restrictions. In comparison to four operational TC intensity models, the MLP model, which is significant, demonstrated the ability to correctly anticipate intensification events that occurred more quickly. In the second test, a light-weight MLP was created for 6-hour intensity forecasts, and when combined with a fictitious TC track model, it generated accurate TC intensity patterns within the Atlantic basin. According to these results, the MLP-based technique shows potential for improving operational TC intensity estimates and can be a useful resource for creating synthetic TCs for climate study. The complexity and computational demands that may be introduced by expanding the deep learning architecture past five hidden layers for greater model depth must be carefully managed. The effectiveness of the framework may be constrained by relying entirely on SHIPS indicators, and its precision might be improved by adding additional variables from additional data sources.

Estimating the path and strength of tropical cyclones (TCs) is crucial for protecting infrastructure and people, especially during the crucial 24-hour warning window. Accurate estimates of TC intensity are frequently difficult to come by using typical forecasting techniques, which depend on observational linkages and conventional numerical projections based on physical equations. With an emphasis on the complicated spatial aspects of three-dimensional (3D) environmental circumstances that include meteorological and oceanographic variables, this study proposed a novel approach by Wang, Wang, and Yan to TC intensity change prediction using deep learning techniques [23]. different qualities effectively sum up the traits and interactions of different environmental influences. The underlying correlations between the spatial distribution attributes and TC intensity variations are captured in order to do this using a 3D convolutional neural network (3D-CNN). A small dataset from TC samples is also expanded using algorithms for image processing to enable better learning. The algorithm extracts complex hybrid features from TC image patterns to anticipate variations in strength over a 24-hour timescale while taking into consideration the immediate 3D state of a TC, which could lead to a significant improvement in TC forecasting skills. The suggested approach for predicting TC intensity change is promising, but it also offers room for improvement and evolution in the future. One drawback is the necessity for more research into fine-grained characteristics and the precise ranges of these features related to TC intensity fluctuations.

Considering the enormous hazards they represent to human life, infrastructure, and the economy, identifying extreme weather events—particularly hurricanes—has always been a difficult task in climate science. Accurate prediction models are crucial to reducing these disasters' catastrophic effects. Even though many deep learning techniques, including recurrent neural networks (RNNs), convolutional auto-encoders, and convolutional neural networks (CNNs), have been used to estimate tropical cyclone intensity, difficulties persist in making accurate predictions. For the purpose of classifying cyclones and assisting with post-disaster management, this study focuses on precisely measuring tropical cyclone intensity. It was developed by Devaraj et al. [24]. The model improves accuracy by including batch normalisation and dropout layers. The work further broadens its scope to include post-disaster evaluation by optimising a pre-trained VGG 19 model to forecast damage extent and automatically annotate satellite imagery data. In order to categorise different severe weather events and automatically label them, VGG 19 was additionally trained on video datasets. These models have the potential to help scientists and meteorologists better understand how storms occur because of their great accuracy in predicting hurricane damage and classifying severe weather events. The research's importance in improving our capacity to successfully manage and respond to these catastrophic weather occurrences is highlighted by its discussion of mitigation measures for lowering hurricane risks. Although deep learning algorithms have showed potential in properly predicting cyclone intensity, estimating the likelihood of storm damage and its impact on susceptible locations faces natural challenges and constraints. The complexity of estimating damage caused by hurricanes depends upon the specific susceptibility of the afflicted area, encompassing essential facilities like water and sewage systems, flood control measures, and transportation routes, in addition to the storm's ferocity.

The reviewed papers present new approaches that use deep learning, convolutional neural networks (CNNs), and generative adversarial networks (GANs) to enhance the prediction of tropical cyclone strength. These methods take into account elements such as the integration of many environmental variables, infrared satellite imaging, and spatiotemporal interactions. Notwithstanding the models' encouraging accuracy in predicting cyclone severity, issues with datasets, computational complexity, and the requirement for wider applications point to areas in which cyclone forecasting research and development is still needed.

3. Problem Statement

The above literature reviews focus on the problem of accurately predicting and estimating tropical cyclone intensity, which is essential for reducing the potentially devastating effects of these weather-related disasters. To increase the accuracy and dependability of tropical cyclone intensity forecasts, researchers offer a variety of deep learning models and methodologies. To improve forecast accuracy, these methods frequently combine physical attributes, spatio-temporal relationships, and environmental variables from a variety of data sources, such as previous track data and satellite imagery. The hunt for more accurate tropical cyclone intensity estimation and damage assessment continues despite the fact that these models are promising in terms of forecasting and understanding cyclone behaviour. These problems include dataset constraints, model complexity, and the requirement for fine-grained characteristics . [24] [20].

4. Cyclone Intensity Prediction Using GA Enhanced Fruit Fly Optimized Hybrid CNN-Bi-LSTM Model

Cyclone intensity is predicted using a thorough methodology that utilises a Hybrid CNN-Bi-LSTM model that has been optimized using a Genetic Algorithm (GA) enhanced Fruit Fly Optimizer. Data preparation is the first step in the procedure, which includes data resizing and normalisation to guarantee consistency and stability across the dataset. The model is then given the tools it needs to grasp the intricate spatiotemporal patterns present in cyclone data using a Hybrid CNN-Bi-LSTM architecture for feature extraction. Following that, model parameters are fine-tuned using the Genetic Algorithm and Fruit Fly Optimizer, improving the model's generalisation and predictive accuracy. The final optimized model is thoroughly assessed and contrasted with previous techniques, demonstrating its superiority in cyclone intensity forecast accuracy. This methodology offers a comprehensive and innovative method for predicting cyclone strength, with the potential to greatly increase forecasting accuracy and support efforts to prepare for and mitigate disasters. Fig.1. shows the block illustration of the proposed method.

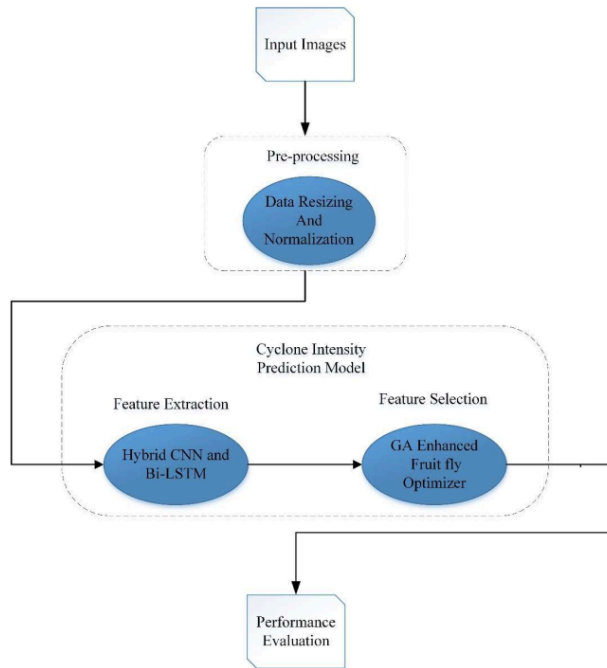


Fig.1. Block Illustration of GA Enhanced Fruit Fly Optimized Hybrid CNN-Bi-LSTM Model

4.1. Data Collection

The dataset used in this study consists of an extensive collection of INFRARED and RAW cyclone imagery covering the Indian Ocean region from 2012 to 2021 and taken by the INSAT-3D satellite. Raw data from the MOSDAC server was used to properly compile this priceless resource. The KNOTS intensity value for every image in the dataset is carefully labelled. KNOTS is a critical statistic for cyclone monitoring and prediction. The

thorough labelling method, in which each image is painstakingly assigned an expiration date that exactly corresponds to its location on the intensity-time graph for each cyclone, is what distinguishes this dataset from others. By allowing for the linkage of cyclone images with its changing intensity over time, this method improves the dataset's usefulness [25]. Fig.2. shows the sample images of dataset.

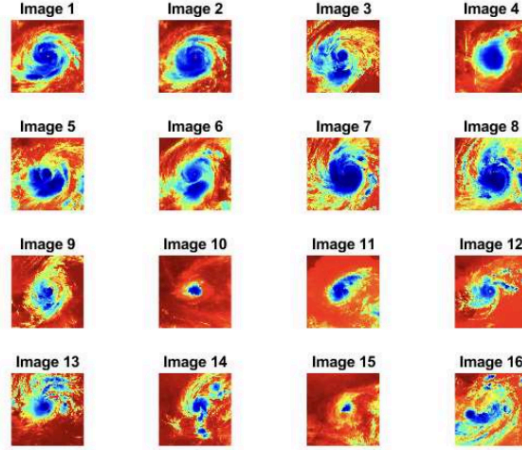


Fig.2. Sample Images of Dataset

4.2. Pre-Processing Using Data Resizing and Normalization

To achieve consistency in image dimensions, which is necessary for the majority of image categorization jobs, the pre-processing step of scaling images to a standard resolution while keeping their aspect ratio is the main goal. By altering the width and height of each image to the same value, potential computational problems are avoided, and the method is compatible with the model architecture of choice. The resolution to use—such as 256x256 pixels or 128x128 pixels—is determined by the computational capabilities at hand as well as the particular specifications of the model being utilized. Resizing an image while keeping the aspect ratio ensures that the proportions of the image are maintained, eliminating distortion. The model being trained may now concentrate on important patterns, which enhances its capacity to generalize from the dataset.

The input information must be normalized in order to keep the cyclone intensity forecast models simple to learn and to produce accurate forecasting outcomes because various prediction components have different dimensions and size ranges. Eqn. (1) describes the data normalization method:

$$Z(j) = \frac{(0.1 \times (\max - z(j)) + 0.9 \times (z(j) - \min))}{(\max - \min)} \quad (1)$$

The original value of a data point before normalization is represented by $Z(j)$. The changed value of the same data point after normalization is shown by the symbol $z(j)$. The term "min" designates the smallest value within the group, which includes $z(j)$ and maybe other data points. "max" denotes the largest value inside the same group, including $z(j)$ and any additional pertinent data points.

Cyclone strength may be predicted as a time sequence problem using historical cyclone cases and LSTM since cyclones change during their life cycles and because there are only few samples from a single cyclone case. For instance, the time sequence of one cyclone case is $Z(1), Z(2), \dots, Z(n)$, while the time series of another cyclone case is $X(1), X(2), \dots, X(m)$; as a result, the processed time series of these cyclone cases is $Z(1), Z(2), \dots, Z(n), X(1), X(2), \dots, X(m)$ [26].

Data must be reverse normalized as follows after model training in Eqn.(2):

$$z(j) = \frac{(Z(j) \times (\max - \min) + 0.9 \times \min - 0.1 \times \max)}{0.8} \quad (2)$$

4.3. Feature Extraction Using Hybrid CNN and Bi-LSTM

The Bi-LSTM turns into the best method to create artificial cyclone intensity curves when the measurements of the cyclone intensity along depth are thought of as structured sequences because it can spread information from adjacent depths with depth-term dependencies in addition to capturing details from a sequence of data. At the same time, the benefits of CNN for extracting abstract features are described. Fig. 3 depicts the suggested CNN and Bi-LSTM approach's conceptual layout. This architecture consists of two branches, one of which uses CNN to gather the characteristics of cyclone intensities and the other of which implements the feature selections using a two-layer Bi-LSTM. For the last dense layer to produce the goal predictions, the features from two branches are combined and mixed together.

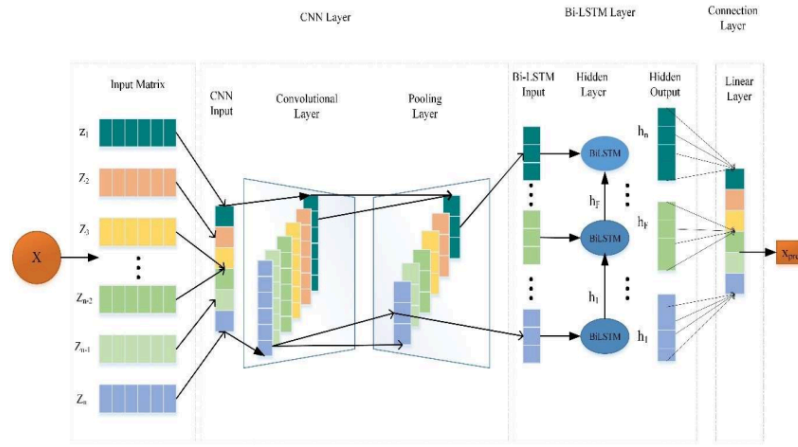


Fig.3. Architecture of Hybrid CNN and Bi-LSTM

The CNN's convolution layer is a crucial component. Every convolutional layer contains a number of convolutional kernels, which are organized using the input information to identify hidden characteristics and create feature maps. Convolutional layer output is produced using feature maps and a non-linear activation function. Following are several ways to express the convolutional layer:

$$C_j = F(W_j \times z_j + b_j) \quad (3)$$

In Eqn. (3), the convolution layer's input is represented by z_j . C_j uses the j^{th} output feature map as its reference. W_j represents the convolution operation's weight matrix. The dot product operation between the weight matrix and the input is represented by the " \times " symbol. b_j the bias vector that was applied to the outcome of the dot product is represented. The function used for activation is represented by $F(\cdot)$. The activation function for

CNNs is frequently selected to be the rectified linear unit (ReLU) function. ReLU is defined mathematically in Eqn. (4):

$$C_j = F(h_j) = \max(0, h_j) \quad (4)$$

Where, h_j is a feature map component that was created by convolutional operations.

The pooling procedure has two goals: it decreases feature maps' dimensions and acts as a safeguard against overfitting. Max pooling is the most often used pooling technique. According to Eqn. (5) and (6), max pooling achieves this goal by locating the maximum value within a predetermined area of the feature maps.

$$\Delta(C_j, C_{j-1}) = \max(C_j, C_{j-1}) \quad (5)$$

$$\phi_j = \Delta(C_j, C_{j-1}) + \gamma_j \quad (6)$$

Where, γ_j denotes the bias, ϕ_j is the output of the max-pooling layer, and $\Delta(\cdot)$ denotes the max pooling sub-sampling function. The feature maps are then sent into the fully connected layer after the convolutional and pooling procedures. The model calculates the ultimate output vector in this layer, as shown in Eqn. (7):

$$y_j = F(t_j \phi_j + \gamma_j) \quad (7)$$

Here, y_j stands for the final output vector, γ_j stands for the bias, and t_j stands for the weight matrix.

The only context that conventional LSTMs may use is the past with forward hidden layers and backward hidden layers, bidirectional architecture was able to simultaneously extract contextual information from both ways.

Figure 2 shows that the forward and backward hidden layers' respective outputs, $\overrightarrow{h_{T'}}$ and $\overleftarrow{h_{T'}}$, are shown. The outputs and hidden sequences of the forward layer are computed sequentially, starting at step 1 and continuing up to step T' . The output and hidden sequences of the backward layer, however, move from step T' back to step 1 in the opposite direction. The forward layer and backward layer outputs, $\overrightarrow{h_{T'}}$ and $\overleftarrow{h_{T'}}$, are computed using the conventional LSTM. A vector, y , with each element generated using Eqn. (8) is the result of the Bi-LSTM layer.

$$y_{T'} = \alpha(\overrightarrow{h_{T'}}, \overleftarrow{h_{T'}}) \quad (8)$$

The two sequences, $\overrightarrow{h_{T'}}$ and $\overleftarrow{h_{T'}}$, are integrated within the Bi-LSTM model using a function. This function may be expressed as a summation function, multiplication function, concatenation function, or average function, among other variations. When a Bi-LSTM layer is used to do cyclone intensity prediction, the final output can be written as a vector, $y = [y_1, y_2, \dots, y_{T'}]$, where the last element, $y_{T'}$, represents the anticipated value for the following depth.

4.4. Optimizing Cyclone Intensity Prediction Through GA Enhanced Fruit Fly Optimizer

With the help of the Fruit Fly Optimizer, it is possible to estimate cyclone intensity more accurately by combining a genetic algorithm (GA) with the features of fruit flies. GA is an adaptable approach that can handle a variety of optimisation issues, both confined and uncontrolled. The purpose of using GA in this situation is to increase a network's durability and speed. In particular, it helps in choosing sensor nodes with the highest energy and storage capacity, increasing the network's lifetime and improving the effectiveness of sensor nodes inside a wireless sensor network [27]. This optimisation strategy is based on the eating habits of fruit flies, which are renowned for their keen vision and ability to detect smell. Every fruit fly in a group keeps track of where it is in relation to the amount of food present in the surrounding area as it seeks for nourishment. They assess the number of smells and travel towards the area with the greatest amount of nourishment, ultimately optimising their foraging technique. An objective function that has the inverse of the smell intensity as its optimisation goal can be used to mathematically convey this behaviour.

$$\begin{aligned} & \min \text{Fitness}(y) \\ & s. t. y \in [Lb_j, Ub_j] \quad j' = 1, 2, \dots, n * \end{aligned} \quad (9)$$

In Eqn. (9), the fruit fly optimisation algorithm's fitness function, or fitness(y), represents the objective function that is equal to the reciprocal of the scent concentration. $y = (y_1, y_2, \dots, y_n)$ represents the fruit fly vector for the parameters under optimisation. $Lb_{j'}$ (Lower bound) and $Ub_{j'}$ (Upper bound) is the values within the search image.

Four major steps make up the optimisation algorithm:

Step 1: Set the upper (Ub) and lower (Lb) boundaries for the search range, the total number of iterations ($maxgen$), the total population size of the fruit fly swarm ($popsi$), and the index of each individual fly (n) as starting algorithm variables. Under the predetermined parameters, a random location is chosen for the swarm at first.

$$\begin{cases} Y_{ini*} = Lb + (Ub - Lb) \times rand() \\ Z_{ini*} = Lb + (Ub - Lb) \times rand() \end{cases} \quad (10)$$

Where Eqn. (10), a random number between 0 and 1 is produced using the function rand ().

Step 2: Each fruit fly searches for food by assessing smell concentrations and communicating its location with others.

Step 2.1: Calculate a new position for each fruit fly with Eqn. (11) and measure its separation from the original location with Eqn. (12).

$$\begin{cases} y_{j'} = y_{ini*} + rand() \\ z_{j'} = z_{ini*} + rand() \end{cases} \quad (11)$$

$$Dist_{j'} = \sqrt{y_{j'}^2 + z_{j'}^2} \quad (12)$$

Step 2.2: Determine the fruit fly's smell concentration judgement value ($S_{j'}$) by taking the reciprocal of its distance, and then plug that value into the fitness equation as stated in Eqn. (13) to get the smell concentration ($Smell_{j'}$):

$$\begin{cases} S_{j'} = \frac{1}{Dist_{j'}} \\ Smell_{j'} = fitness(S_{j'}) \end{cases} \quad (13)$$

Step 3: Then, relocate the swarm to the area where there is the least amount of fruit fly odour present by using Eqn. (14).

$$\begin{cases} [best\ smell, best\ index] = \min(smell) \\ y_{ini*} = y(best\ index) \\ z_{ini*} = z(best\ index) \end{cases} \quad (14)$$

Step 4: Continuously iterate through Steps 2 and 3 until either the desired cyclone intensity prediction has been achieved or the maximum number of iterations has been reached. This iterative process mimics the search and adaptation behaviour inspired by fruit flies, aiding in the optimization of cyclone intensity prediction [28].

By using this optimisation strategy, Cyclone Intensity Prediction can have access to improved search capabilities motivated by the cooperative foraging behaviour of fruit flies, ultimately producing forecasts that are more precise and effective.

GA Enhanced Fruit Fly Optimized Hybrid CNN-Bi-LSTM Algorithm

Input: INFRARED and RAW cyclone imagery dataset

Output: Cyclone Intensity Prediction

```
Load the input image
Perform preprocessing process //Data Resizing and Normalization

Feature extraction using Hybrid CNN-Bi-LSTM //CNN layers extract spatial characteristics.
//LSTM layers record temporal dependencies.

Feature Selection //GA enhanced FFO
1. Set population size and maximum iteration // Initialization of a parameter
2. Initialization of swarm location
3. Repeat // Combining visual and smell indicators to predict cyclone severity.
4. (Best smell, best index) =fitness //Adaptive value Calculation
5. If best smell < smell best,
    Then, yini = y(best index)
        zini = z(best index)
    And then, best smell = smell best
6. t=t+1
    until t=maximum iteration or find food

End
```

28

5. Results and Discussion

This section discusses the outcome of the suggested model's efficiency in cyclone intensity prediction. By utilizing an extensive dataset that included both RAW and INFRARED cyclone pictures, the model was able to attain an astounding 99.4% accuracy rate. The implementation was carried out in Python and involved a number of steps, including feature extraction, normalization, and data downsizing using a hybrid CNN and Bi-LSTM architecture. The model's great precision was largely due to the optimization step, which included a GA augmented Fruit fly Optimizer. These results highlight the robustness of the suggested method and show that it has the capacity to accurately anticipate cyclone strength, which is important for risk reduction and disaster preparedness.

5.1. Aspect Ratio Distribution

The statistical distribution of aspect ratios within a dataset of cyclones is referred to as the "aspect ratio distribution" in cyclone intensity prediction. Aspect ratio, which is commonly expressed as the ratio of the major axis to the minor axis of the storm system, is an indicator of how circular or elongated the cloud pattern of a cyclone is. Analyzing the aspect ratio distribution in the context of cyclone strength prediction sheds light on cyclone shape aspects. Meteorologists and climate scientists can better forecast the strength of cyclones by knowing how these ratios change between various cyclones. This will help them analyze the severity and possible evolution of cyclonic systems.

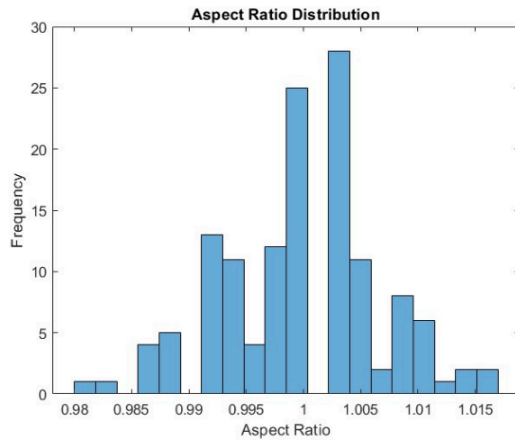


Fig. 4. Aspect Ratio Distribution

Fig. 4. provides important information on the form properties of these meteorological systems. The aspect ratio values are plotted on the x-axis, which shows the proportion of the major to minor axes of the cyclones. A visual depiction of the distribution throughout the dataset is given by the y-axis, which measures the frequency of occurrence for each aspect ratio. Trends in cyclone forms in the dataset are explained by the graph's peaks and patterns, which display common aspect ratios. This kind of visualization is helpful in recognizing the differences and similarities among cyclone structures, providing vital data for models that predict cyclone intensity, and assisting meteorologists in identifying the various shapes that cyclonic systems might take in the dataset.

5.2. Cyclone Intensity

A graph that shows the fluctuations in the strength or intensity of cyclonic systems over a given time span is called a cyclone intensity graph. The graphic illustrates the variations in cyclone intensity categories, which can vary by location and range from tropical depressions to hurricanes or typhoons. These categories are typically quantified on a scale like the Saffir-Simpson Hurricane Wind Scale. Fig. 5. shows the cyclone intensity.

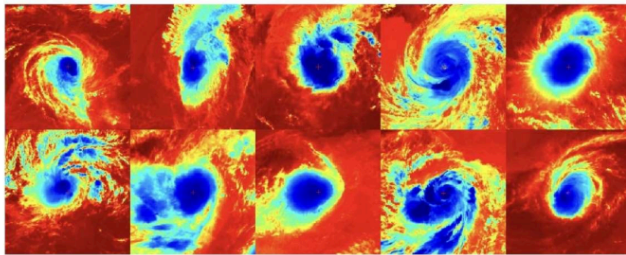


Fig. 5. Intensity of Cyclone

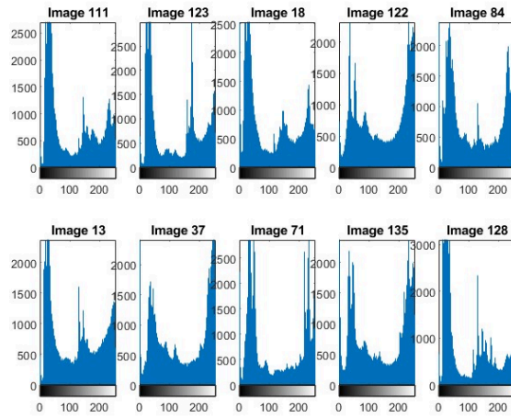


Fig. 6. Distribution of Various Cyclone Intensity metrics in the Dataset

Fig. 6. shows how different cyclone intensity prediction measures are distributed within a certain dataset. Cyclone frequency is plotted on the x-axis, and various metrics are plotted on the y-axis, such as hurricane wind radius, maximum wind speed, rainfall rate, storm surge height, forward speed, tornado potential, sea surface temperature, eyewall replacement cycle, and duration. A metric's frequency within the dataset is indicated by each data point on the graph. With its ability to display trends and variances in the frequency of several metrics connected to cyclones, this visual representation offers a thorough summary of the dataset's attributes. By gaining knowledge about how storm features are distributed, analysts can spot patterns and connections that lead to a more complex comprehension of cyclone activity.

5.3. Performance Metrics

Performance metrics are quantitative measurements used to assess the precision and efficacy of prediction models. Examples of these metrics are Mean Absolute Error (MAE), Mean Squared Error (MSE), Root Mean Squared Error (RMSE), and R-squared (R^2). The mean absolute error (MAE) measures the difference between the expected and actual outcomes and gives a clear picture of prediction mistake. The average squared difference (MSE) between the actual and anticipated values highlights bigger mistakes. The square root of the average squared differences, or RMSE, is a statistic that provides information in the original measurements of the projected values. It is derived from MSE. A greater value denotes better predictive accuracy. R^2 , or the coefficient of determination, measures the percentage of variance in the dependent variable explained by the model. Together with each other, these metrics help to thoroughly evaluate the accuracy and dependability of prediction models, enabling well-informed choices across a range of fields, such as data analysis, statistics, and machine learning.

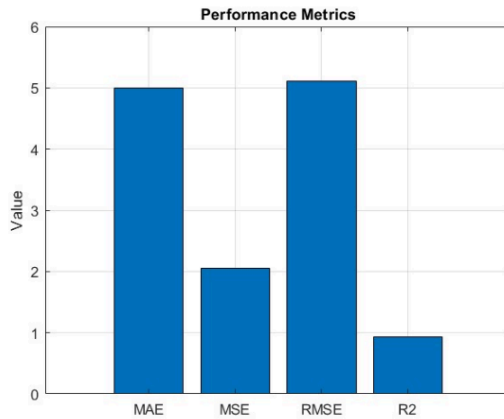


Fig. 7. Performance Metrics

Fig. 7, which shows the metrics MAE, MSE, RMSE, and R2 on the x-axis, offers a thorough summary of the model evaluation metrics. The y-axis displays the predictive model's efficacy by quantifying the associated values for every metric. Interestingly, the average absolute difference between the expected and actual values is represented by the Mean Absolute Error (MAE), which is recorded at 5. Because of its low value of 2.1, the Mean Squared Error (MSE) highlights the squared discrepancies between the actual and anticipated values. The square root of the average squared discrepancies in the original units of the predicted values is represented by the Root Mean Squared Error (RMSE), which is 5.1%. A high R2 score of 0.9 suggests that the model accounts for a sizable amount of the variance in the dependent variable. The decreased error metrics and high coefficient of determination in this graph demonstrate the predictive model's effectiveness in addition to providing a visual depiction of its performance across these important measures.

5.4. Scatter Plot for Predicted vs Actual

A scatter diagram for a graphical representation of the relationship between the anticipated intensity values and the corresponding actual intensity values of cyclones is called "Predicted vs. Actual" in cyclone intensity prediction. The x-axis in this map shows the anticipated intensity values produced by a predictive model, while the y-axis shows the actual observed intensity values. Each point in this plot represents a distinct cyclonic event. By displaying the alignment or divergence between anticipated and actual values, the scatter plot offers a visual way to evaluate the predictive model's accuracy and precision. Points along a diagonal line that are tightly clustered indicate a strong connection and accurate forecasts, whereas dispersed points show differences between the actual and expected intensities.

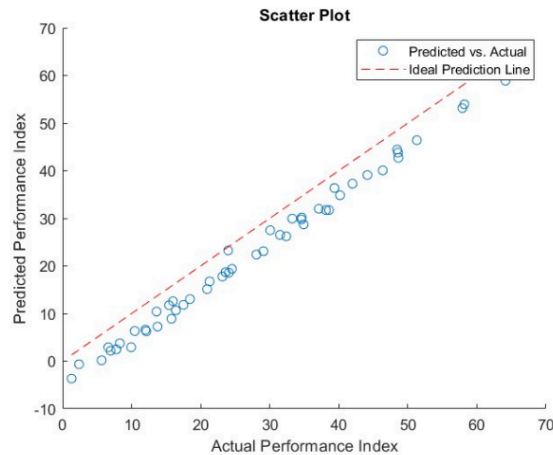


Fig. 8. Scatter Plot

The correlation between the appropriate expected performance index and the actual performance index is visually represented in Fig. 8. The real performance index values are plotted on the x-axis, which shows the observed intensities of the cyclones. The predictive model simultaneously generates expected performance index values, which are quantified on the y-axis. Every data point represents a distinct cyclonic event on the scatter plot, and the position of the point indicates how well the model predicted the strength. Precise predictions are indicated by a tight clustering along the diagonal line, which indicates a strong agreement between expected and actual values. On the other hand, disparities are indicated by dispersed points, which draw attention to situations in which the predicted model differs from the measured intensities.

5.5. Actual vs Predicted Performance

Actual vs Predicted Performance is a quantitative assessment that contrasts the actual or observed results with the related expectations produced by a system or model. Numerous industries, including data analytics, forecasting, and machine learning, frequently use this performance evaluation. For example, Actual vs. Predicted Performance in the context of cyclone intensity prediction measures the degree of agreement between the actual cyclone intensity values and the intensity values predicted by a predictive model. This comparison reveals any discrepancies or consistency between expected and observed outcomes, offering insights into the model's accuracy and dependability.

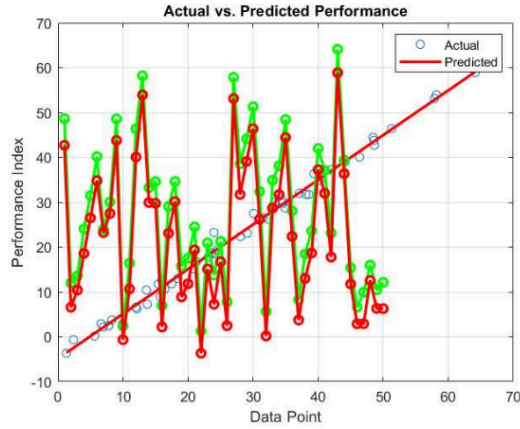


Fig. 9. Actual vs Predicted Performance

Visual representation of the alignment between observed data points and related anticipated performance indices is provided by Fig. 9. The y-axis measures the performance index, which is produced by a predictive model and spans from -10 to 70. On the x-axis, data points from 0 to 70 indicate particular cases or events. It is intuitive to compare the actual results with the forecasts because each plotted point on the graph represents a unique observation. The points' distance from the diagonal line represents the model's accuracy; a tighter clustering suggests more accurate predictions. Disturbances between the actual and anticipated performance indices, on the other hand, are indicated by deviations from the diagonal line.

5.6. Fitness Improvement Over GA Enhanced Fruit-Fly Optimization

Fitness Improvement Over GA Enhanced Fruit-fly Optimization is an enhanced optimization technique used in cyclone intensity prediction that combines Fruit-fly Optimization Algorithm (FOA) and Genetic Algorithm (GA) to improve and optimize a predictive model's fitness function. In order to guarantee that the predictive model converges to more ideal solutions, the integration of GA and FOA attempts to enhance the overall performance and accuracy of the optimization process. The resultant Fitness Improvement Over GA Enhanced Fruit-fly Optimization method successfully utilizes the complementary strengths of GA and FOA inside the optimization framework in an effort to attain improved accuracy in cyclone intensity prediction.

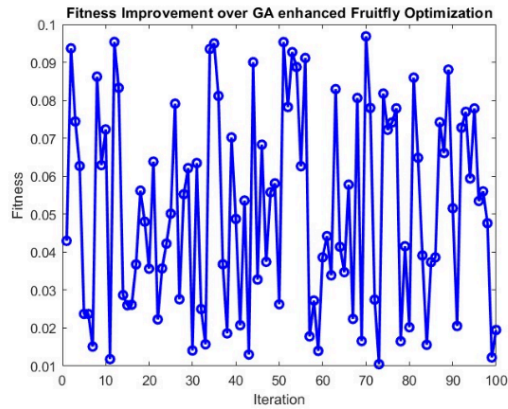


Fig. 10. Fitness Improvement Over GA Enhanced Fruit-Fly Optimization

The optimization process across multiple iterations in the context of cyclone intensity prediction is visually shown by Fig. 10. The x-axis shows the number of iterations (from 0 to 100) that represent the various actions that were done to improve the predictive model. In addition, the y-axis quantifies the fitness values, which span 0.01 to 0.1 and show how accurate and successful the model is at each iteration. The graph shows the evolution of the fitness values as the iterations go on, indicating the convergence towards more ideal solutions. The model's predictive performance keeps becoming better, as seen by a declining trend in the fitness values.

5.7. Comparison of the Performance Metrics with Other Methods

Table 1. Comparison of the Performance Metrics with Other Methods

Methods	Accuracy (%)	Precision (%)	Recall (%)	F1-score (%)
VGG-16 [29]	78	96	76	81
Ty 5- CNN [30]	95.23	95.25	95.23	94.12
Proposed CNN-Bi-LSTM model	99.4	99	98.12	99.1

A comparison of the suggested CNN-Bi-LSTM model, Ty 5-CNN, and VGG-16 are among the methods for predicting cyclone strength that are shown in Table. 1 and Fig.11. The accuracy percentages show how accurate the models are overall. The CNN-Bi-LSTM model that has been suggested has an astounding accuracy of 99.4%, which is higher than both the VGG-16 (78%) and Ty 5-CNN (95.23%) models combined. The precision percentages show how well the models can detect positive cases; at 99%, the suggested model performs better than the other models. Recall percentages show how well the models capture all positive cases; the suggested model outperforms VGG-16 and Ty 5-CNN in this regard, obtaining an astounding 98.12% recall. The proposed CNN-Bi-LSTM model's balanced performance of 99.1% is further highlighted by the F1-score, which is a harmonic mean of precision and recall. In comparison to the evaluated techniques, these results collectively demonstrate the improved predictive capabilities of the proposed model, indicating its potential as a highly accurate and dependable tool for cyclone intensity forecasting.

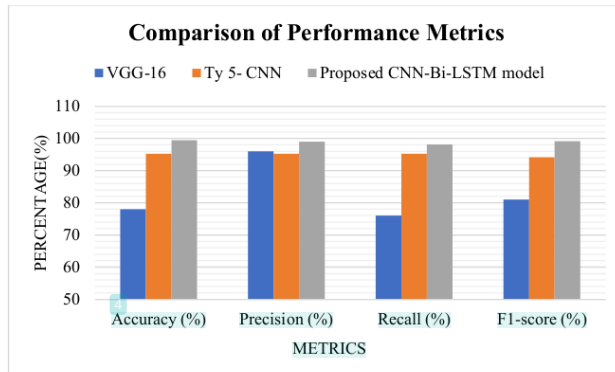


Fig.11. Comparison of Performance Metrics

5.8. Discussion

The results of the extensive analysis provide important new insights into how well the GA-enhanced Fruit-fly Optimized Hybrid CNN-Bi-LSTM model predicts cyclone intensity. These results include Aspect Ratio Distribution, Cyclone Intensity, Performance Metrics, and Scatter Plot for Predicted vs. Actual, Actual vs. Predicted Performance, and Fitness Improvement Over GA Enhanced Fruit-fly Optimization. The shape properties of cyclones are shown by the aspect ratio distribution, which may have an impact on their strength. The results of Cyclone Intensity offer a thorough comprehension of the storm strength distribution in the dataset. Performance metrics that quantify the accuracy of the model include R2, RMSE, MAE, and MSE. A thorough understanding of the model's forecasting ability is provided by the scatter plot and actual vs. predicted performance, which graphically show the alignment between expected and actual cyclone intensities. The effectiveness of the optimization procedure is demonstrated by the Fitness Improvement Over GA Enhanced Fruit-fly Optimization. Collectively, these findings highlight the model's resilience, offering useful resources for precise forecasting and improving our capacity to more precisely anticipate and get prepared for potential cyclone intensities.

7. Conclusion and Future Work

This work offers an efficient method for integrating a Fruit Fly Optimized Hybrid CNN-Bi-LSTM model augmented by GA to improve the prediction of cyclone strength. The study makes use of rigorous pre-processing methods such data downsizing and normalization, leveraging an extensive data collection approach that includes both INFRARED and RAW cyclone images. The novel feature extraction method that makes use of a hybrid CNN and Bi-LSTM architecture forms the basis of the suggested model. A unique dimension to model enhancement is included by applying a GA-enhanced Fruit Fly Optimizer to optimize the prediction of cyclone intensity. Python is an implementation tool that provides a dependable execution platform. The outcomes indicate how effective this integrated strategy is, with enhanced predicting accuracy and dependability for cyclone strength. The accuracy of forecast models for important weather events can be improved by utilizing sophisticated optimization approaches, as demonstrated by this model, which also advances the discipline of meteorology. Future research aims to improve the suggested model by examining different optimization techniques and adding a wider range of datasets. The forecasting power of the model might be improved by more research into how different climatic variables affect cyclone strength. Further expanding the study to incorporate real-time data integration and evaluating the model's performance across other geographic locations would enhance the model's wider application and resilience.

References

- [1] A. N. Ramos-Valle, E. N. Curchitser, and C. L. Bruyère, "Impact of Tropical Cyclone Landfall Angle on Storm Surge Along the Mid-Atlantic Bight," *JGR Atmospheres*, vol. 125, no. 4, p. e2019JD031796, Feb. 2020, doi: 10.1029/2019JD031796.

- [2] V.-K. Ian, R. Tse, S.-K. Tang, and G. Pau, "Bridging the Gap: Enhancing Storm Surge Prediction and Decision Support with Bidirectional Attention-Based LSTM," *Atmosphere*, vol. 14, no. 7, p. 1082, Jun. 2023, doi: 10.3390/atmos14071082.
- [3] V. Singh, "Systematic scientific strategies associated with mitigating the challenges in predicting track and intensity of cyclones across the world basins," In Review, preprint, Jul. 2022. doi: 10.21203/rs.3.rs-1853424/v2.
- [4] G. Zhang and W. Zhu, "Characteristics and Predictive Modeling of Short-term Impacts of Hurricanes on the US Employment," arXiv, Jul. 25, 2023. doi: 10.48550/arXiv.2307.13686.
- [5] D. Pierides, S. Clegg, and M. P. E Cunha, "The Historical Embeddedness of Organizational Paradoxes: Risk-related Rituals and Realities in Emergency Management," in *Research in the Sociology of Organizations*, R. Bednarek, M. P. E Cunha, J. Schad, and W. K. Smith, Eds., Emerald Publishing Limited, 2021, pp. 65–85. doi: 10.1108/S0733-558X2021000073b006.
- [6] S. H. Akash, S. K. Sarkar, A. A. Bindajam, R. Kumari, S. Talukdar, and J. Mallick, "Assessment of coastal vulnerability using integrated fuzzy analytical hierarchy process and geospatial technology for effective coastal management," *Environ Sci Pollut Res*, Jun. 2023, doi: 10.1007/s11356-023-28317-y.
- [7] S. M. Khan *et al.*, "Model Driven Approach for Efficient Flood Disaster Management with Meta Model Support," *Land*, vol. 12, no. 8, p. 1538, Aug. 2023, doi: 10.3390/land12081538.
- [8] J. Lawrence, P. Blackett, and N. A. Craddock-Henry, "Cascading climate change impacts and implications," *Climate Risk Management*, vol. 29, p. 100234, 2020, doi: 10.1016/j.crm.2020.100234.
- [9] A. Subramanian *et al.*, "Long-term impacts of climate change on coastal and transitional eco-systems in India: an overview of its current status, future projections, solutions, and policies," *RSC Adv.*, vol. 13, no. 18, pp. 12204–12228, 2023, doi: 10.1039/D2RA07448F.
- [10] D. Purwar, R. Shiuza, and J. Flacke, "Assessment of cascading effects of typhoons on water and sanitation services: A case study of informal settlements in Malabon, Philippines," *International Journal of Disaster Risk Reduction*, vol. 51, p. 101755, Dec. 2020, doi: 10.1016/j.ijdr.2020.101755.
- [11] S. Singh, "Coordination and Digitalization as Means to Accelerated and Climate-Smart Trade Facilitation in Fiji's Context".
- [12] M. Mondal *et al.*, "Climate change, multi-hazards and society: An empirical study on the coastal community of Indian Sundarban," *Natural Hazards Research*, vol. 2, no. 2, pp. 84–96, Jun. 2022, doi: 10.1016/j.nhres.2022.04.002.
- [13] C.-Y. Bai, B.-F. Chen, and H.-T. Lin, "Benchmarking Tropical Cyclone Rapid Intensification with Satellite Images and Attention-based Deep Models," arXiv, Sep. 24, 2020. Accessed: Sep. 22, 2023. [Online]. Available: <http://arxiv.org/abs/1909.11616>
- [14] J. Thuemmel *et al.*, "Inductive biases in deep learning models for weather prediction," arXiv, Apr. 06, 2023. Accessed: Sep. 22, 2023. [Online]. Available: <http://arxiv.org/abs/2304.04664>
- [15] W. Wu, R. Emerton, Q. Duan, A. W. Wood, F. Wetterhall, and D. E. Robertson, "Ensemble flood forecasting: Current status and future opportunities," *WIREs Water*, vol. 7, no. 3, p. e1432, May 2020, doi: 10.1002/wat2.1432.
- [16] P. Mondal, T. Dutta, A. Qadir, and S. Sharma, "Radar and optical remote sensing for near real-time assessments of cyclone impacts on coastal ecosystems," *Remote Sens Ecol Conserv*, vol. 8, no. 4, pp. 506–520, Aug. 2022, doi: 10.1002/rse2.257.
- [17] S. Lecacheux, J. Rohmer, F. Paris, R. Pedreros, H. Quetelard, and F. Bonnardot, "Toward the probabilistic forecasting of cyclone-induced marine flooding by overtopping at Reunion Island aided by a time-varying random-forest classification approach," *Nat Hazards*, vol. 105, no. 1, pp. 227–251, Jan. 2021, doi: 10.1007/s11069-020-04307-y.
- [18] J. A. Knaff *et al.*, "Estimating tropical cyclone surface winds: Current status, emerging technologies, historical evolution, and a look to the future," *Tropical Cyclone Research and Review*, vol. 10, no. 3, pp. 125–150, Sep. 2021, doi: 10.1016/j.tcr.2021.09.002.
- [19] C.-J. Zhang, X.-J. Wang, L.-M. Ma, and X.-Q. Lu, "Tropical Cyclone Intensity Classification and Estimation Using Infrared Satellite Images With Deep Learning," *IEEE J. Sel. Top. Appl. Earth Observations Remote Sensing*, vol. 14, pp. 2070–2086, 2021, doi: 10.1109/JSTARS.2021.3050767.
- [20] S. Jiang, H. Fan, and C. Wang, "Improvement of Typhoon Intensity Forecasting by Using a Novel Spatio-Temporal Deep Learning Model," *Remote Sensing*, vol. 14, no. 20, p. 5205, Oct. 2022, doi: 10.3390/rs14205205.
- [21] M. Ruttgers, S. Jeon, S. Lee, and D. You, "Prediction of Typhoon Track and Intensity Using a Generative Adversarial Network With Observational and Meteorological Data," *IEEE Access*, vol. 10, pp. 48434–48446, 2022, doi: 10.1109/ACCESS.2022.3172301.
- [22] X. Wenwei *et al.*, "Deep Learning Experiments for Tropical Cyclone Intensity Forecasts," *Weather and Forecasting*, Jun. 2021, doi: 10.1175/WAF-D-20-0104.1.

- [23] X. Wang, W. Wang, and B. Yan, "Tropical Cyclone Intensity Change Prediction Based on Surrounding Environmental Conditions with Deep Learning," *Water*, vol. 12, no. 10, p. 2685, Sep. 2020, doi: 10.3390/w12102685.
- [24] J. Devaraj, S. Ganesan, R. Elavarasan, and U. Subramaniam, "A Novel Deep Learning Based Model for Tropical Intensity Estimation and Post-Disaster Management of Hurricanes," *Applied Sciences*, vol. 11, no. 9, p. 4129, Apr. 2021, doi: 10.3390/app11094129.
- [25] "[CNN] Cyclone Intensity Estimation DeepLearning," Accessed: Nov. 10, 2023. [Online]. Available: <https://kaggle.com/code/muki2003/cnn-cyclone-intensity-estimation-deeplearning>
- [26] S. Yuan, C. Wang, B. Mu, F. Zhou, and W. Duan, "Typhoon Intensity Forecasting Based on LSTM Using the Rolling Forecast Method," *Algorithms*, vol. 14, no. 3, p. 83, Mar. 2021, doi: 10.3390/a14030083.
- [27] S. S. Mohar, S. Goyal, and R. Kaur, "Fruit Fly Optimization Algorithm for Intelligent IoT Applications," in *Fog, Edge, and Pervasive Computing in Intelligent IoT Driven Applications*, 1st ed., D. Gupta and A. Khamparia, Eds., Wiley, 2020, pp. 287–309. doi: 10.1002/9781119670087.ch16.
- [28] L. Wang, Y. Xiong, S. Li, and Y.-R. Zeng, "New fruit fly optimization algorithm with joint search strategies for function optimization problems," *Knowledge-Based Systems*, vol. 176, pp. 77–96, Jul. 2019, doi: 10.1016/j.knsys.2019.03.028.
- [29] S. Kaur *et al.*, "Transfer Learning-Based Automatic Hurricane Damage Detection Using Satellite Images," *Electronics*, vol. 11, no. 9, p. 1448, Apr. 2022, doi: 10.3390/electronics11091448.
- [30] S. Jiang and L. Tao, "Classification and Estimation of Typhoon Intensity from Geostationary Meteorological Satellite Images Based on Deep Learning," *Atmosphere*, vol. 13, no. 7, p. 1113, Jul. 2022, doi: 10.3390/atmos13071113.

Optimizing Cyclone Intensity Prediction Through GA Enhanced Fruit Fly Optimized Hybrid CNN-Bi-LSTM Model for Accurate Forecasting

ORIGINALITY REPORT

14%	%	13%	2%
SIMILARITY INDEX	INTERNET SOURCES	PUBLICATIONS	STUDENT PAPERS

PRIMARY SOURCES

1	Xu Wenwei, Balaguru Karthik, August Andrew, Lalo Nicholas, Hodas Nathan, DeMaria Mark, Judi David. "Deep Learning Experiments for Tropical Cyclone Intensity Forecasts", Weather and Forecasting, 2021	1%
	Publication	
2	Priyanka Nandal, Prerna Mann, Navdeep Bohra, Ghadah Aldehim, Asma Abbas Hassan Elnour, Randa Allafi. "Tropical cyclone intensity estimation based on YOLO-NAS using satellite images in real time", Alexandria Engineering Journal, 2025	1%
	Publication	
3	S.P. Jani, M. Adam Khan. "Applications of AI in Smart Technologies and Manufacturing", CRC Press, 2025	1%
	Publication	
4	"Mobile Radio Communications and 5G Networks", Springer Science and Business Media LLC, 2024	1%
	Publication	
5	Lin Wang, Yingnan Xiong, Shuwen Li, Yu-Rong Zeng. "New fruit fly optimization algorithm with joint search strategies for function optimization problems", Knowledge-Based Systems, 2019	1%
	Publication	

6	Mario Ruttgers, Soohwan Jeon, Sangseung Lee, Donghyun You. "Prediction of typhoon track and intensity using a generative adversarial network with observational and meteorological data", IEEE Access, 2022 Publication	1 %
7	Shijin Yuan, Cheng Wang, Bin Mu, Feifan Zhou, Wansuo Duan. "Typhoon Intensity Forecasting Based on LSTM Using the Rolling Forecast Method", Algorithms, 2021 Publication	1 %
8	Chang-Jiang Zhang, Xiao-Jie Wang, Lei-Ming Ma, Xiao-Qin Lu. "Tropical Cyclone Intensity Classification and Estimation Using Infrared Satellite Images With Deep Learning", IEEE Journal of Selected Topics in Applied Earth Observations and Remote Sensing, 2021 Publication	<1 %
9	"Innovations in ICT: Sustainability for Societal and Industrial Impact", Springer Science and Business Media LLC, 2025 Publication	<1 %
10	Kousik Das Malakar, Manish Kumar, Subhash Anand, Gloria Kuzur. "Climate Change and Socio-Ecological Transformation", Springer Science and Business Media LLC, 2023 Publication	<1 %
11	Submitted to University of Huddersfield Student Paper	<1 %
12	Mamta Kumari, Zoirov Ulmas, Suseendra R, Janjhyam Venkata Naga Ramesh, Yousef A. Baker El-Ebiary. "Utilizing Federated Learning for Enhanced Real-Time Traffic Prediction in Smart Urban Environments", International	<1 %

13

Franciskus Antonius Alijoyo, S. Janani, Kathari Santosh, Safa N. Shweihat et al. "Enhancing AI interpretation and decision-making: Integrating cognitive computational models with deep learning for advanced uncertain reasoning systems", Alexandria Engineering Journal, 2024

Publication

<1 %

14

Shashikant Kumar, Kunal Singh Lohiya, Nagamma Patil. "Forecasting the Fury: A Deep Learning Approach to Predicting Cyclone Intensity", 2023 Third International Conference on Secure Cyber Computing and Communication (ICSCCC), 2023

Publication

<1 %

15

Submitted to Liverpool John Moores University

Student Paper

<1 %

16

Pushpa Choudhary, Sambit Satpathy, Arvind Dagur, Dharendra Kumar Shukla. "Recent Trends in Intelligent Computing and Communication", CRC Press, 2025

Publication

<1 %

17

V. Subramaniaswamy, G Revathy, Logesh Ravi, N. Thillaiarasu, Naresh Kshetri. "Deep Learning and Blockchain Technology for Smart and Sustainable Cities", CRC Press, 2025

Publication

<1 %

18

Miratul Khusna Mufida, Abdessamad Ait El Cadi, Thierry Delot, Martin Trépanier, Dorsaf Zekri. "Spatiotemporal Clustering of Parking

<1 %

Lots at the City Level for Efficiently Sharing Occupancy Forecasting Models", Sensors, 2023

Publication

19

Rachael C Tighe, John Considine, Sharlotte L. B. Kramer, Tom Berfield. "Thermomechanics & Infrared Imaging, Inverse Problem Methodologies and Mechanics of Additive & Advanced Manufactured Materials, Volume 6", River Publishers, 2025

<1 %

Publication

20

Udara Yedukondalu, V Vijayasri Bolisetty. "Advancing Innovation through AI and Machine Learning Algorithms - Computational Intelligence for Virtual System Optimization. A proceeding of ICMVRCET – 2025", CRC Press, 2025

<1 %

Publication

21

Pengju Xu, Kai Liu, Lan Shi, Chunqiao Song. "Machine learning modeling reveals the spatial variations of lake water salinity on the endorheic Tibetan Plateau", Journal of Hydrology: Regional Studies, 2024

<1 %

Publication

22

Ankur Gupta. "Next Generation Computing and Information Systems", CRC Press, 2024

<1 %

Publication

23

Masoud Alajmi, Mohamed K. Nour, Siwar Ben Haj Hassine, Mimouna Abdullah Alkhonaini et al. "Energy Aware Secure Cyber-Physical Systems with Clustered Wireless Sensor Networks", Computers, Materials & Continua, 2022

<1 %

Publication

24 Manoj Kumar, Tanweer Ali, Jaume Anguera, Suman Lata Tripathi. "Emerging Technologies in AI, Computation, Communication, and Cybersecurity - Proceedings of the First International Conference on Artificial Intelligence, Computation, Communication and Network Security (AICCoNS 2025)", CRC Press, 2026
Publication

25 Shuailong Jiang, Hanjie Fan, Chunzai Wang. "Improvement of Typhoon Intensity Forecasting by Using a Novel Spatio-Temporal Deep Learning Model", Remote Sensing, 2022
Publication

26 "Soft Computing Systems", Springer Science and Business Media LLC, 2018
Publication

27 Submitted to Heriot-Watt University
Student Paper

28 Syed Asad Shabbir Bukhari, Imran Shafi, Jamil Ahmad, Hammad Tanveer Butt, Tahir Khurshaid, Imran Ashraf. "Enhancing flood monitoring and prevention using machine learning and IoT integration", Natural Hazards, 2024
Publication

29 Submitted to University of Hertfordshire
Student Paper

30 Musthak Ahmed Shaik*, Sudheer Vinnakoti, Malligunta Kiran Kumar. "A Discrete Wavelet transform based Protection Scheme for Three Phase Induction Motor", International Journal of Recent Technology and Engineering (IJRTE), 2019
Publication

31 Saiyed Salim Sayeed, Hemant Kumar Sharma, Pramod Kumar Yadav, Brijesh Mishra. <1 %
"Advances in Electronics, Computer, Physical and Chemical Sciences - Proceedings of International Conference on Electronics, Computer, Physical and Chemical Sciences (ICEPCPS 2024), July 19–21, 2024, JNRM Port Blair, India", CRC Press, 2025

Publication

32 "Technological Horizons of Decarbonization Based on Environmental Innovations", Springer Science and Business Media LLC, 2025 <1 %

Publication

33 Bing Hao, He Du, Xuefeng Dai, Hong Liang. <1 %
"Automatic Recharging Path Planning for Cleaning Robots", Mobile Information Systems, 2021

Publication

34 Jayanthi Devaraj, Sumathi Ganesan, Rajvikram Elavarasan, Umashankar Subramaniam. <1 %
"A Novel Deep Learning Based Model for Tropical Intensity Estimation and Post-Disaster Management of Hurricanes", Applied Sciences, 2021

Publication

35 Showmitra Kumar Sarkar, Rhyme Rubayet Rudra, Md. Sadmin Nur, Palash Chandra Das. <1 %
"Partial least-squares regression for soil salinity mapping in Bangladesh", Ecological Indicators, 2023

Publication

36 Srinivas Ambala, Aarti Amod Agarkar, Punam Sunil Raskar, Venkateswarlu Gundu, N. Mageswari, T.S. Geetha. <1 %
"Advanced machine

learning for real-time tibial bone force monitoring in runners using wearable sensors", Measurement: Sensors, 2024

Publication

37 "Advances in Swarm Intelligence", Springer Science and Business Media LLC, 2017 <1 %

Publication

38 Neha Sehrawat, Sahil Vashisht, Amritpal Singh. "Solar irradiance forecasting models using machine learning techniques and digital twin: A case study with comparison", International Journal of Intelligent Networks, 2023 <1 %

Publication

39 Lei Wu, Yaowen Yang, Muneesh Maheshwari. "Strain prediction for critical positions of FPSO under different loading of stored oil using GAIFOA-BP neural network", Marine Structures, 2020 <1 %

Publication

40 Samhita Kothandaraman, Shreyash Salunke, Vedant Bhatkar, Jagruti Jadhav. "Deep Learning Based Cyclone Intensity Estimation", Research Square Platform LLC, 2023 <1 %

Publication

41 Shuailong Jiang, Maohan Liang, Chunzai Wang, Hanjie Fan, Yingying Ma. "Deep-TCP: Multi-source Data Fusion for Deep Learning-Powered Tropical Cyclone Intensity Prediction to Enhance Urban Sustainability", Information Fusion, 2024 <1 %

Publication

42 Zhe Zhang, Xuying Yang, Xin Wang, Bingbing Wang, Chao Wang, Zhenhong Du. "A neural network with spatiotemporal encoding <1 %

module for tropical cyclone intensity
estimation from infrared satellite image",
Knowledge-Based Systems, 2022

Publication

-
- 43 "Machine Learning and Knowledge Discovery
in Databases: Applied Data Science Track",
Springer Science and Business Media LLC,
2021 <1 %
- Publication

-
- 44 Ahmad Sami Al-Shamayleh, Rabha W.
Ibrahim. "Grapevine disease detection using
(q,τ)-nabla calculus quantum deformation
with deep learning features", MethodsX, 2025 <1 %
- Publication

-
- 45 Dongfang Ma, Lingjie Wang, Sunke Fang,
Jianmin Lin. "Tropical cyclone intensity
prediction by inter- and intra-pattern fusion
based on multi-source data", Environmental
Research Letters, 2022 <1 %
- Publication

-
- 46 Gyan Prakash, Amandeep Kaur. "AI and
Sustainable Transformations", CRC Press,
2025 <1 %
- Publication

-
- 47 H.L. Gururaj, Francesco Flammini, J. Shreyas.
"Data Science & Exploration in Artificial
Intelligence", CRC Press, 2025 <1 %
- Publication

-
- 48 Rui Zhang, Yingjie Liu, Luhui Yue, Qingshan
Liu, Renlong Hang. "Estimating Tropical
Cyclone Intensity Using an STIA Model From
Himawari-8 Satellite Images in the Western
North Pacific Basin", IEEE Transactions on
Geoscience and Remote Sensing, 2024 <1 %
- Publication
-

49 Whata, Albert. "Statistical and Deep Learning Methods in Causal Inference", University of the Witwatersrand, Johannesburg (South Africa), 2025

Publication

<1 %

50 Xiangyin Zhang, Xingyang Lu, Songmin Jia, Xiuzhi Li. "A novel phase angle-encoded fruit fly optimization algorithm with mutation adaptation mechanism applied to UAV path planning", Applied Soft Computing, 2018

Publication

<1 %

51 Xin Wang, Wenke Wang, Bing Yan. "Tropical Cyclone Intensity Change Prediction Based on Surrounding Environmental Conditions with Deep Learning", Water, 2020

Publication

<1 %

52 Zhaoyang Ma, Yunfeng Yan, Jianmin Lin, Dongfang Ma. "A Multi-Scale and Multi-Layer Feature Extraction Network with Dual Attention for Tropical Cyclone Intensity Estimation", IEEE Transactions on Geoscience and Remote Sensing, 2024

Publication

<1 %

53 Zhe Zhang, Xuying Yang, Lingfei Shi, Bingbing Wang, Zhenhong Du, Feng Zhang, Renyi Liu. "A neural network framework for fine-grained tropical cyclone intensity prediction", Knowledge-Based Systems, 2022

Publication

<1 %

54 Zhenghong Wu, Hongkai Jiang, Shaowei Liu, Ruixin Wang. "A deep reinforcement transfer convolutional neural network for rolling bearing fault diagnosis", ISA Transactions, 2022

Publication

<1 %

55

Senthil Kumar Jayaraman, Venkataraman Venkatachalam, Marwa M. Eid, Kannan Krithivasan et al. "Enhancing Cyclone Intensity Prediction for Smart Cities Using a Deep-Learning Approach for Accurate Prediction", Atmosphere, 2023

Publication

<1 %

56

Xi Chen, Hao Cai, Siyu Xue. "Quantum-based optical sensors for enhanced energy-efficient wireless communication", Optical and Quantum Electronics, 2024

Publication

<1 %

57

Mukul Saxena, Saikat Sarkar, Debasish Roy. "Inverse Hessian by stochastic projection and application to system identification in nonlinear mechanics of solids", International Journal of Non-Linear Mechanics, 2024

Publication

<1 %

58

Rashmi Rani, Manoj Kumar Ramaiya. "Emotion Recognition on Speech using Hybrid Model CNN and BI-LSTM Techniques", Springer Science and Business Media LLC, 2024

Publication

<1 %

Exclude quotes On

Exclude matches < 3 words

Exclude bibliography On